



# Electronic Sensors, Inc.

**Level Devil<sup>®</sup>  
Automation**

## DESCRIPTION

The *Level Devil* Automation software package is an extension to the basic *Level Devil* collection and displaying software program. Once a remote tank is sampled and its volume calculated, the automation program checks the volume against a trigger point and performs an action if the condition is right. The action is one of several types: Pager, Email, Fax or Report. Up to three different actions may be performed for each trigger. Action logs are kept upon each trigger's occurrence and the success/failure of each action's attempt.

## OPERATION

The automation package runs in the background on any Windows based computer. User friendly setup screens help manage the triggers and action items to be performed. Test buttons provide ease setup and check out. For example, there is no need to force a low level condition to check the pager action. Just press the pager test button and a pager phone call is made with a numerical test code. Once setup, the program runs continuously in the background with no interaction required. Data from the *Level Devil* program is continuously monitored with actions being performed as each new trigger condition occurs. The automation package may be ran on a different computer than the *Level Devil* program.

VMI Automation --- Electronic Sensors, Inc. --- Version 6.69

File Action Triggers View Help

Start Stop Action Log Activity Triggers Exit

Start Time: 4/23/2002 12:27:57 PM  
 Number of triggers: 0  
 Number of action attempts: 0  
 Number of checks/hour: 0  
 Number check Loops: 0  
 System Clock: 12:29:24

Sort Order: All Enabled

Message Center: This Is A Demo Copy

Group	Site	Type	Number	Trigger Type	Description	Last Data Time	Status	Specifier	Set Level	Last Tr
1000	0108	Tank	1	High Level	High Alarm 2	2/22/2002 1:06:06 PM	Normal	Percent	92	9/14/20
1000	0100	Tank	1	Low Level	Low Alarm	2/22/2002 1:01:30 PM	Normal	Gallons	50	9/14/20
1000	0100	Tank	2	Low Level	Low Alarm	2/23/2002 2:01:30 PM	Normal	Gallons	50	9/14/20
1000	0100	Tank	3	Low Level	Low Alarm	2/21/2002 3:10:30 PM	Normal	Gallons	50	9/14/20
1000	0100	Tank	4	High Level	High Alarm	2/22/2002 1:01:30 PM	Normal	Percent	90	9/14/20
1000	0100	Tank	5	High Level	High Alarm	2/22/2002 2:01:20 PM	Normal	Percent	90	9/14/20

**Electronic Sensors, Inc**  
2063 S Edwards St  
Wichita, KS 67213

Rev. 10/09

Phone: 316-267-2807  
Toll Free: 800-886-2511  
Fax: 316-267-2819  
Email: [leveldevil@leveldevil.com](mailto:leveldevil@leveldevil.com)  
Home Page: [www.leveldevil.com](http://www.leveldevil.com)

**Level Devil<sup>®</sup>**  
Bulk Inventory Management Solutions

**SPECIFICATIONS**

Requires:

*Level Devil®* Auto Answer or Auto Call  
4 M disk space minimum  
100 MHz or higher

Two modems

One for answer (*Level Devil®*)  
One for action (Automation)

Email system (optional)  
MAPI compliant

Faxing software (optional)  
Winfax 10.0  
Faxing modem

Specifications subject to change without notice.

**HOW TO ORDER**

Include the -A1 when ordering *Level Devil®* program or to order separate:

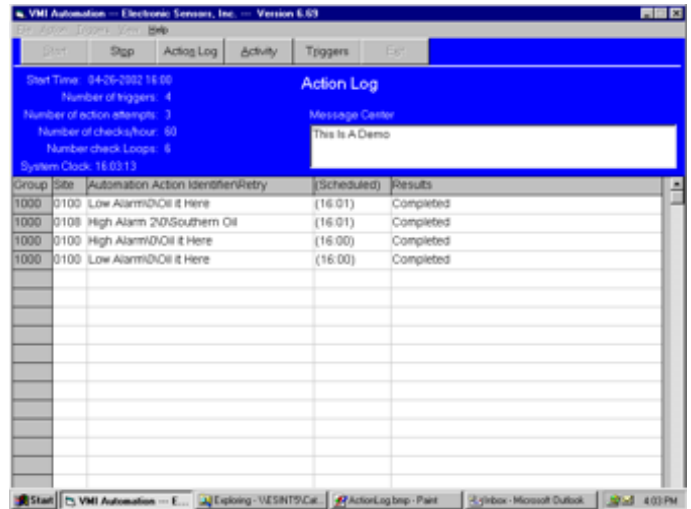
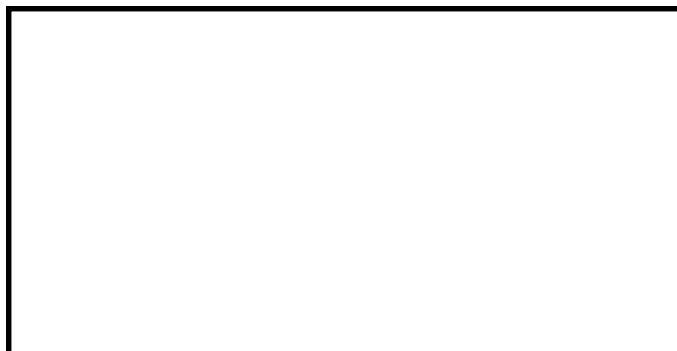
TV6-A1

**WARRANTY**

*Electronic Sensors, Inc. and its suppliers provide software "as is" and with all faults, and hereby disclaim all other warranties and conditions, either expressed, implied or statutory, including but not limited to any (if any) implied warranties or conditions of merchantability, of fitness for a particular purpose, of lack of viruses, and of lack of negligence.*

Winfax is a registered trademark of Symatic.  
Windows is a registered trademark of Microsoft.  
MAPI stands for Messaging Application Programming Interface.

Your Area Representative:



**SUPPORT POLICY**

Clients who purchase a *Level Devil®* software package or upgrade will receive unlimited telephone technical support at no additional charge for 90 days after the software is shipped. After the ninety-day initial period, software support will be invoiced at the current hourly rates.

**Hourly Rates:** Telephone technical support charges are calculated on a per-event basis. There is a minimum charge per event for the first half-hour. Subsequent time is billed for each additional fifteen-minute increment. Actual time is rounded up or down to the nearest fifteen-minute increment. Only one initial half-hour charge applies to an event, even if the event requires more than one phone conversation to resolve. Contact Electronic Sensors, Inc. for current pricing.

**Annual Unlimited Support:** For clients who prefer it, we offer a support plan based on an annual fee that provides unlimited telephone software support with no additional charge per event. Annual rates are based on the number of sites being monitored and the number of workstations being supported. For a quote, please call your ESI representative at 800-886-2511 or Email us at [leveldevil@leveldevil.com](mailto:leveldevil@leveldevil.com).

**Electronic Sensors, Inc.**

2063 S Edwards St • Wichita, KS 67213  
Phone: 316-267-2807 • Fax: 316-267-2819  
Toll Free: 800-886-2511  
Email: [leveldevil@leveldevil.com](mailto:leveldevil@leveldevil.com)  
Home Page: [www.leveldevil.com](http://www.leveldevil.com)

