



Electronic Sensors, Inc.

Level Devil® 600 Series Software

DESCRIPTION

Level Devil® is a powerful software program used to collect, store, display and manage an enormous amount of liquid tank level information. It is a networkable Windows based program designed to be very easy to use. The most comprehensive software program of its kind available. It allows for a company wide utilization of a computerized bulk inventory management system, with rapid and automated inventory tracking capabilities. Typical applications include Tank Farm Management (TFM), Vendor Managed Inventory (VMI), Supply Chain Management (SCM), and full and less than full truck load routing.

LEVEL DEVIL® IN GENERAL

The building block of **Level Devil®** is its main screen which is a "quick-glance" compilation of data in a spread sheet format. Each spreadsheet row contains user-selected information about a specific tank, and the total spreadsheet is sortable in a variety of orders: Low Level, High Level, Total Volume, Tank Contents, etc. An assortment of pop down menus allows users to select other features including the setup and managing of sites and tanks. Multiple users may have access to **Level Devil®**, each with their own set of privileges.

Level Devil® is a multiple entry level program allowing a company to start simple and add features as their requirements change. Each **Level Devil®** entry point adds new features and program capabilities, but keeps the same look and feel - so users pick up the new features and feel right at home.

LevelDevil - ESI OK Test Station

File Accounts Communications View Help Exit

Current Information

USER: EST TIME: 4:44:47 DATE: 3/3/2000

Test This Message And Test if It Saves

Off Line
Auto Call Disabled
Call List: NEW
Sort Order
Group, Site, Tank

Group	Site	Tank	Alarm	Product	Volume	Units	Last Inch	Last Date
3333	0100	1	Ok	Acid	5937 Gallons		175.0	7/20/1998 9:34:51 AM U
3333	0101	1	Ok	Waste	1798 Gallons		53.0	7/20/1998 9:44:55 AM U
3333	0102	1	High	Cleaner	3291 Gallons		97.0	7/20/1998 9:54:59 AM U
3333	0103	1	Ok	10w 30	4614 Gallons		136.0	7/20/1998 10:00:03 AM U
3333	0104	1	Low	10w 40	746 Gallons		22.0	7/20/1998 10:10:51 AM U
3333	0105	1	Ok	80w 90	2816 Gallons		83.0	7/20/1998 10:21:01 AM U
3333	0106	1	Ok	Machine	4037 Gallons		119.0	7/20/1998 10:34:53 AM U
3333	0107	1	Ok	Fat	1594 Gallons		47.0	7/20/1998 10:43:51 AM U
3333	0108	1	Ok	Anti-Freez	2612 Gallons		77.0	7/20/1998 10:54:41 AM U

SPECIFICATIONS SUBJECT TO CHANGE WITHOUT NOTICE

Electronic Sensors, Inc.

1611 W. Harry
Wichita, KS 67213

Rev 03/02

Phone: 316-267-2807
Toll Free: 800-886-2511
Fax: 316-267-2819
Email: leveldevil@leveldevil.com
Home Page: www.leveldevil.com

Level Devil®
Bulk Inventory Management Solutions

AVAILABLE ENTRY POINTS

TV6-MC (Manual Call)

TV6-MC allows the calling of sites and displaying tank data on the spreadsheet screen. Each tank contacted is time stamped so freshness of data is known.

TV6-AC (Auto Call)

TV6-AC allows all the features of TV6-MC and adds the ability to setup a call list so sites may be called automatically. This feature is useful for calling sites at night, when phone rates are at their lowest and the sites are likely unattended.

TV6-TH (Time History)

TV6-TH has all the features of TV6-AC and adds the ability to review older tank data. Tank data is stored in an MS Access 97 database which may be viewed in plotted or tabular form or exported to a spreadsheet. The information can also be generated in paper form using a printer, or plot printing device.

TV6-AA (Auto Answer)

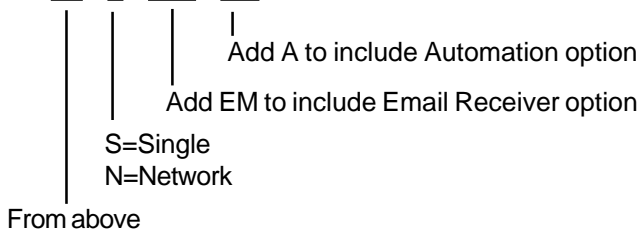
TV6-AA allows all the features of TV6-TH and adds the ability to auto answer sites which are setup for calling in.

TV6-FC (Forecasting)

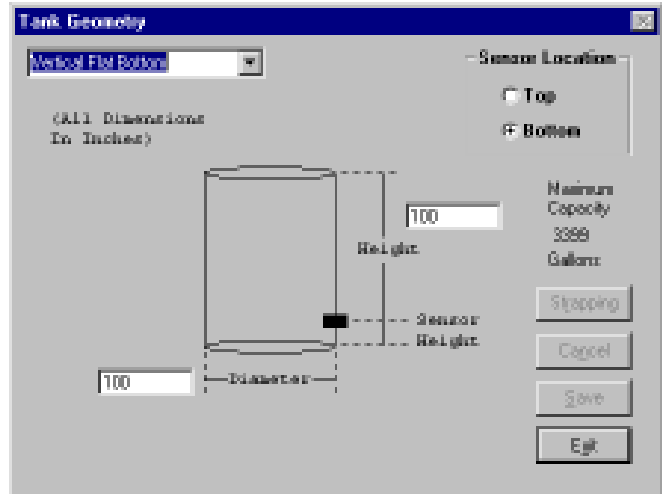
TV6-FC allows all the features of TV6-AA and adds the ability to forecast tank levels using previous data.

HOW TO ORDER

TV6 - xx - x - EM - A1



Your Area Representative:



REQUIREMENTS

Windows 95, 98, 2000 or NT4.0

CD ROM drive

100mhz 486 PC or higher

16MB RAM minimum, 32MB+ recommended for all versions

190MB free storage on hard drive

Modem (optional) – Allows the calling or receiving of site data through a phone line.

Email receiver (-EM) (optional) – Allows the receiving of site data from the internet through email. All email data is converted and stored in the MS Access 97 database as if it had come in from a modem. Required when receiving data from satellite and pager remote transmit units.

Automation option – see Automation cut sheet

Electronic Sensors, Inc.

1611 W. Harry • Wichita, KS 67213
Phone: 316-267-2807 • Fax: 316-267-2819
Toll Free: 800-886-2511
Email: leveldevil@leveldevil.com
Home Page: www.leveldevil.com

